

POLITECNICO DI BARI



# FACT SHEET 2022-2023

INTERNATIONAL RELATIONS OFFICE

# POLITECNICO DI BARI I BARI05

Via Amendola, 126/B – 70126 BARI - ITALY





# Main references

## INSTITUTIONAL ERASMUS+ COORDINATOR

*Name, Phone, Email*

*Dr. Antonella PALERMO*

*+39 080 596 2179*

*antonella.palermo@poliba.it*

## HEAD OF INTERNATIONAL RELATIONS OFFICE

*Name, Phone, Email*

*Dr. Rosilda SAMMARCO*

*+39 080 596 2582*

*rosilda.sanmarco@poliba.it*

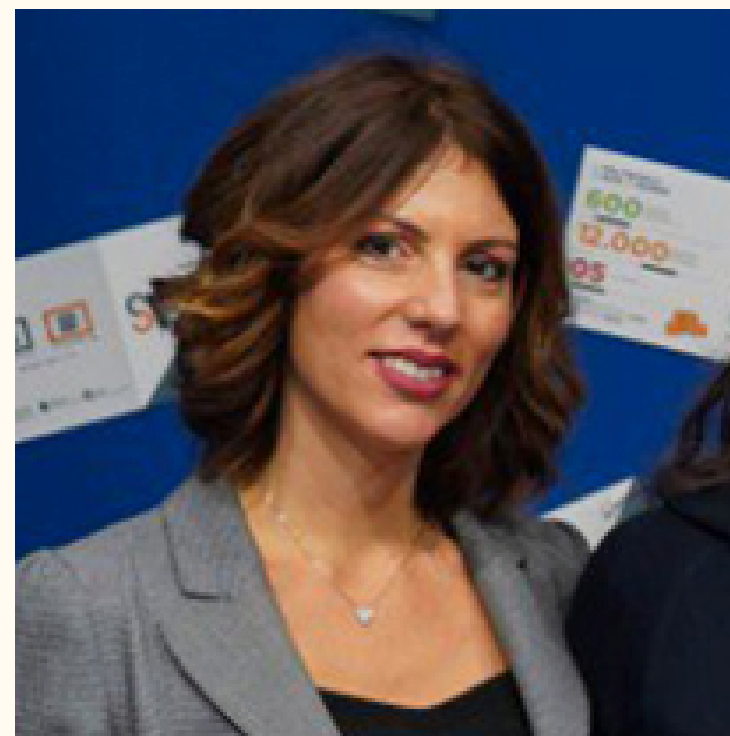
## ERASMUS OFFICER

*Name, Phone, Email*

*Dr. Roberta MASCETTI*

*+39 080 596 2227*

*roberta.mascetti@poliba.it*



## OFFICIAL WEBSITE

<http://www.poliba.it>

## COURSE CATALOGUE

[https://poliba.esse3.cineca.it/Guide/ListaFacoltaCorsi.do;jsessionid=4F3D68146A12D6843566BD2595C53CA2.esse3-poliba-prod-05?cod\\_lingua=eng](https://poliba.esse3.cineca.it/Guide/ListaFacoltaCorsi.do;jsessionid=4F3D68146A12D6843566BD2595C53CA2.esse3-poliba-prod-05?cod_lingua=eng)

## WEBSITE FOR DEPARTMENTAL INFORMATION

<http://dei.poliba.it/DEI-it/index.html>

<https://www.dipartimentoicar.it/>

<http://dmmm.poliba.it/>

<http://www.dicatech.poliba.it/index.php?id=258>





## APPLICATION DEADLINES

**Full year/Fall semester:**  
30th June

**Spring Semester:**  
30th November

## ACADEMIC CALENDAR

**1st Semester (winter):** 1st October – 31st January (exams in January-February)

**2nd Semester (spring):** 1st March – 30th June (exams in July-September)

## EMAIL ADDRESS FOR NOMINATIONS

[rosilda.sanmarco@poliba.it](mailto:rosilda.sanmarco@poliba.it)





# Admission documents

- APPLICATION FORM
- LEARNING AGREEMENT
- ACADEMIC TRANSCRIPT OF RECORDS
- B1 ITALIAN OR ENGLISH CERTIFICATE OR ANY PROOF OF ITALIAN OR ENGLISH LANGUAGE KNOWLEDGE
- ID CARD/PASSPORT
- PHOTO



# Language of instruction

All courses are taught in Italian, except for the Master Degree Courses in:

- Industrial Design
- Mechanical Engineering
- Telecommunications Engineering
- Informatics Engineering
- Automation
- All Ph.D Courses

which are taught in English.

ITALIAN



# Language required

B1 level of Italian and B2 English

## LANGUAGE CERTIFICATE

Recommended but not compulsory

## LANGUAGE CENTER

<http://www.poliba.it/it/linguistico/centro-linguistico-di-ateneo>

## CONTACT PERSON

Dr. Valeria Marangio - [languages@poliba.it](mailto:languages@poliba.it)

---





# Departments and Coordinators



**ArCoD**  
Politecnico di Bari

DIPARTIMENTO DI ARCHITETTURA, COSTRUZIONE  
E DESIGN

## ARCHITECTURE

INCOMING Students: Prof.ssa Giulia Annalinda NEGLIA  
[giuliaannalinda.neglia@poliba.it](mailto:giuliaannalinda.neglia@poliba.it)

OUTGOING Students: Prof.ssa Valentina CASTAGNOLO  
[valentina.castagnolo@poliba.it](mailto:valentina.castagnolo@poliba.it)



# Departments and Coordinators



**ArCoD**  
Politecnico di Bari

DIPARTIMENTO DI ARCHITETTURA, COSTRUZIONE  
E DESIGN

## INDUSTRIAL DESIGN

INCOMING Students: Prof. Francesco MARTELLOTTA  
[francesco.martellotta@poliba.it](mailto:francesco.martellotta@poliba.it)

OUTGOING Students: Prof.ssa Annalisa DI ROMA  
[annalisa.diroma@poliba.it](mailto:annalisa.diroma@poliba.it)



# Departments and Coordinators



DIPARTIMENTO DI INGEGNERIA CIVILE,  
AMBIENTALE, DEL TERRITORIO, EDILE E DI CHIMICA

## **BUILDING ENGINEERING**

Prof. Francesco Iannone

[francesco.iannone@poliba.it](mailto:francesco.iannone@poliba.it)

## **BUILDING-ARCHITECTURE ENGINEERING**

Prof. Carmelo Maria TORRE

[carmelomaria.torre@poliba.it](mailto:carmelomaria.torre@poliba.it)

## **CIVIL AND ENVIRONMENTAL ENGINEERING**

Prof.ssa Francesca DE SERIO

[francesca.deserio@poliba.it](mailto:francesca.deserio@poliba.it)





# Departments and Coordinators



**AUTOMATION –  
ELECTRICAL – ELECTRONIC – COMPUTER  
SCIENCE – TELECOMMUNICATIONS  
ENGINEERING**

INCOMING Students: Prof. Vito Giuseppe MONOPOLI  
[vitogiuseppe.monopoli@poliba.it](mailto:vitogiuseppe.monopoli@poliba.it)

OUTGOING Students: Prof. Tiziano POLITI  
[tiziano.politi@poliba.it](mailto:tiziano.politi@poliba.it)



# Departments and Coordinators



## MANAGEMENT ENGINEERING

INCOMING Students: Prof.ssa Ilaria GIANNOCCARO  
[ilaria.giannoccaro@poliba.it](mailto:ilaria.giannoccaro@poliba.it)

OUTGOING Students: Prof.ssa Roberta PELLEGRINO  
[roberta.pellegrino@poliba.it](mailto:roberta.pellegrino@poliba.it)



# Departments and Coordinators



## MECHANICAL ENGINEERING

INCOMING Students: Prof. Fulvio LAVECCHIA  
[fulvio.lavecchia@poliba.it](mailto:fulvio.lavecchia@poliba.it)

OUTGOING Students: Prof. Marco TORRESI  
[marco.torresi@poliba.it](mailto:marco.torresi@poliba.it)







In the Italian university system, each course unit is graded on a scale from 18 to 30 points, (minimum 18 – maximum 30). To pass a course unit, a student must receive a grade of at least 18 points out of 30. “30 e lode” is a special mention for outstanding performance.

As a rule non-passing grades are simply not awarded, and the exam is not registered in the student's career.

For the final degree, a 111-point scale is used. Passing grades are 66 to 110, with the additional superior grade “110 e lode” (110 cum laude). The mark for the final degree is given on the basis of all marks obtained in exams, and on the evaluation of the final thesis.

# Italian grading System



European Health Insurance Card, compulsory for all EU students.  
A private insurance coverage is highly recommended.

# Safety and Health

# Immigration Requirements



EU students (except Turkish): identity card or Passport.

Non European and Turkish students must arrive with a student visa, whose application can be made at the Italian Diplomatic and Consular Authorities in your country of residence. In order to find out whether you need an entry visa or not you can simply use the database of the Italian Ministry of Foreign Affairs. You will be asked to enter their nationality, country of residence, length and reason of the stay.





# Guide for International Incoming Students

<http://www.poliba.it/it/internazionale/studyingpoliba-international-students>



# Accommodation Service

Our Institution doesn't provide reserved places at Student House; students are required to find accommodation by themselves.

The support in finding accommodation can be provided by:

**ESN Bari** (<http://www.esnbari.org>);

**International Community Erasmus Bari** (IC BARI), (<https://www.facebook.com/whiteandrederasmusland/?ref=bookmarks>);

**CampusX Bari** (<http://www.campusxbari.it>);

**CercoAlloggio Bari** (<https://www.cercoalloggio.com/#!/international>);

**HousingAnywhere** (<https://housinganywhere.com/s/Bari--Italy>);

**Erasmus Play** for Incoming and Outgoing students (<https://erasmusplay.com/it/>)





enjoy



#Erasmus+

Politecnico di Bari - International Relations Office